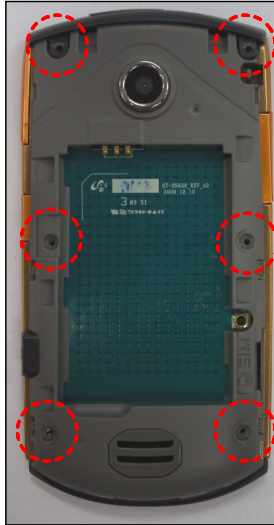


11. Disassembly and Assembly Instructions

11-1. Disassembly

1

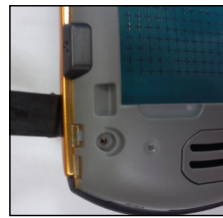
1) Unscrew the 6 points.



2

1) Separate the REAR CASE.

Hook 11Points



Be careful to damage the SMD material.
Don't use DISASSEMBLE JIG deeply.

※ Caution

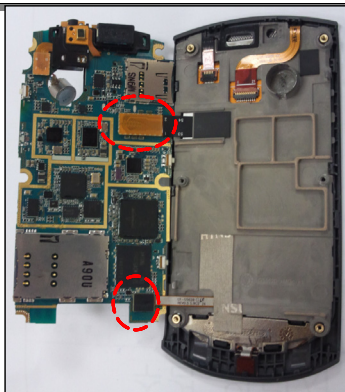
1) Be care of scratch and molding damage.

※ Caution

1) Be care of scratch and molding damage.

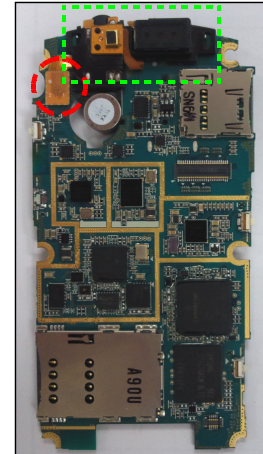
3

1) Separate the motor from bracket.
2) Widen the space between PBA and Front Ass'y.
3) After separating the LCD and Sub key connector from PBA, disassemble PBA from Front Ass'y.



4

1) Separate the Camera module from PBA.
2) After separating the 3.5Phi module connector, disassemble the 2 hooks both side of 3.5Phi module.



※ Caution

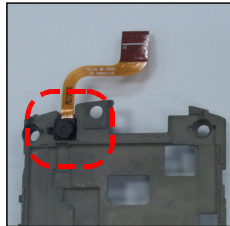
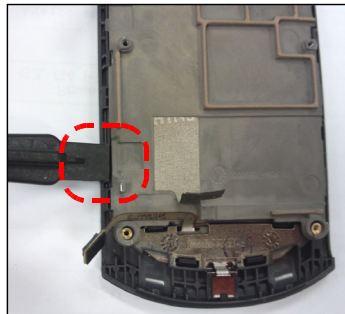
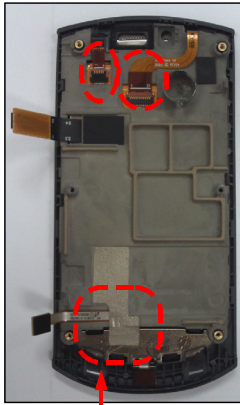
1) Be care of PBA and molding damage.
2) Be care of motor wire and each kind of FPCB damage.

※ Caution

1) Be care of PBA and each module damage.

5

- 1) Unlock the TSP and CIF Camera connector.
- 2) Remove conductive tape as a below picture.
- 3) Separate the bracket from Front ass'y.
- 4) Separate the CIF Camera form Front ass'y.

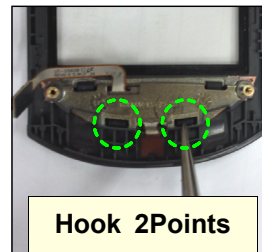
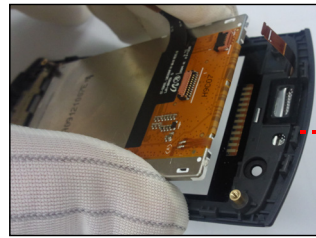


※ Caution

- 1) Be care of scratch and molding damage.
- 2) Be care of each kind of FPCB damage.

6

- 1) Separate LCD, Sub Keypad and Sub Key Dome sheet from the Front Case.



Hook 2Points

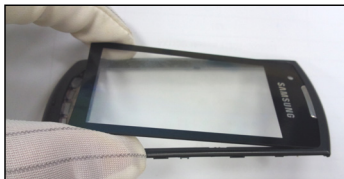


※ Caution

- 1) Be care of scratch and molding damage.
- 2) Be care of damage to the LCD.

7

- 1) Separate the TSP window form Front Case.



※ Caution

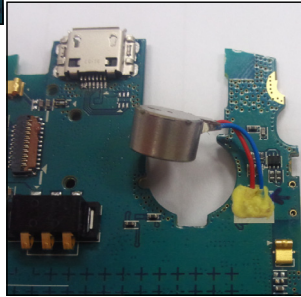
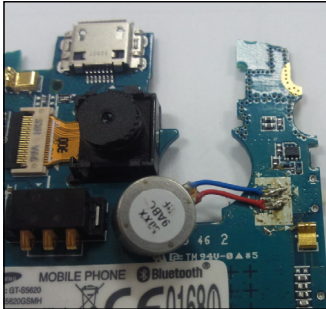
- 1) Be care of FPCB damage.
- 2) Be care of TSP crack.

※ Caution

11-2 Assembly

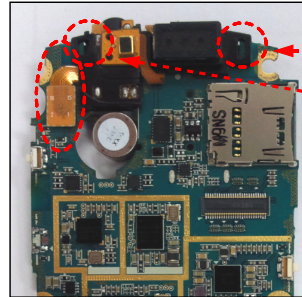
1

1) Solder the motor then bonding.



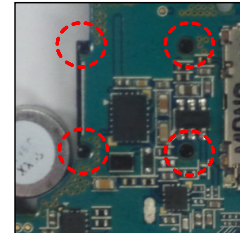
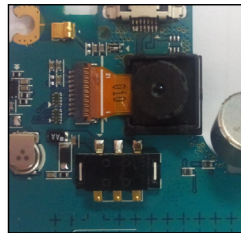
2

1) Assemble the 3.5phi module.
 2) Connect the 3.5phi FPCB connector.
 3) Assemble the Camera module.



1st Hook

2nd Hook



※ Caution

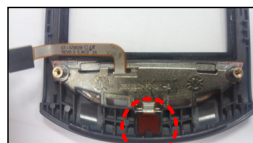
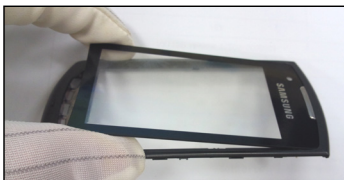
1) Be care of PBA and motor wire damage.

※ Caution

1) Be care of damage the 3.5phi module & motor wire.

3

1) Assemble the TSP to Front Case as a below picture.
 2) Attatch the Sub key dome sheet.
 3) Put the mic in the mic holder.



Check mic holder

4

1) Assemble the sub key pad.

Push the sub key pad.



※ Caution

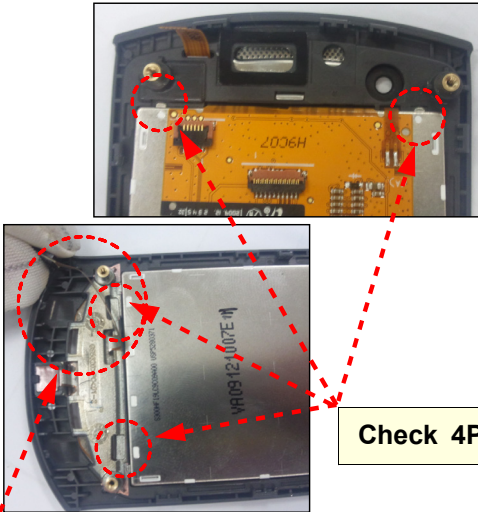
1) Be care of damage to each FPCB and TSP.

※ Caution

1) Be care of molding damage.

5

1) Assemble the LCD.



Check 4Points

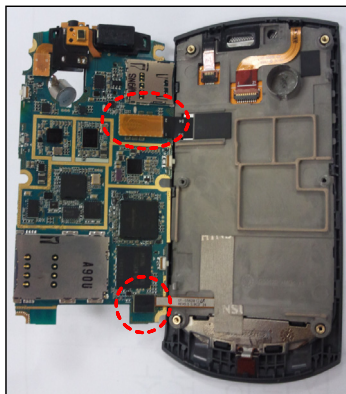
Sub key FPCB

※ Caution

- 1) Be care of LCD crack.
- 2) Be care of FPCB damage.

7

- 1) Connect each kind of connector as a below picture.
- 2) Assemble the PBA to Front ass'y.
- 3) Assemble the motor.

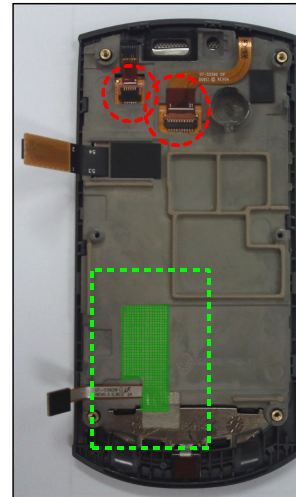


※ Caution

- 1) Be care of each kind of FPCB damage.
- 2) Be care of PBA and motor wire damage.

6

- 1) Assemble the bracket to Front ass'y.
- 2) Connect each kind of connector.
- 3) Attatch the conduction tape as a below picture.

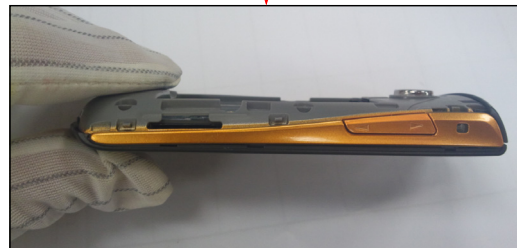
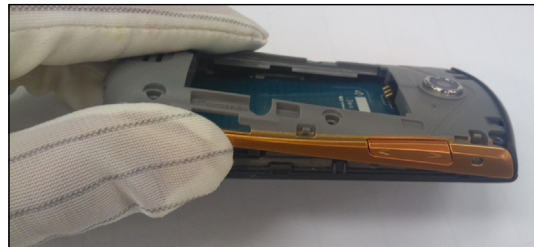


※ Caution

- 1) Be care of FPCB damage.

8

- 1) Assemble the Rear Case as a below picture.



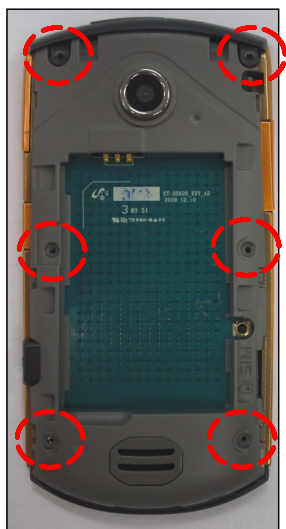
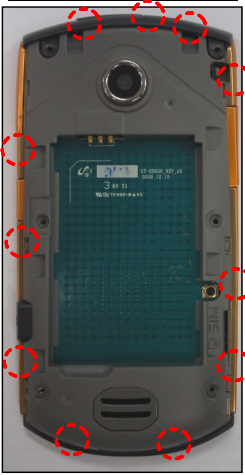
※ Caution

- 1) Be care of molding damage.

9

1) Screw 6 points.

Hook 11Points



※ Caution

1) Be care of scratch and molding damage.